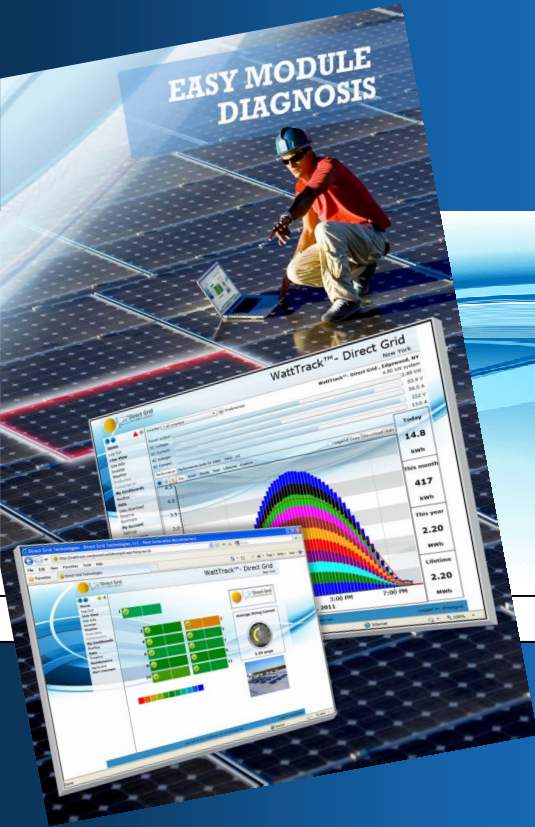


Efficiency and Reliability
Through Innovation

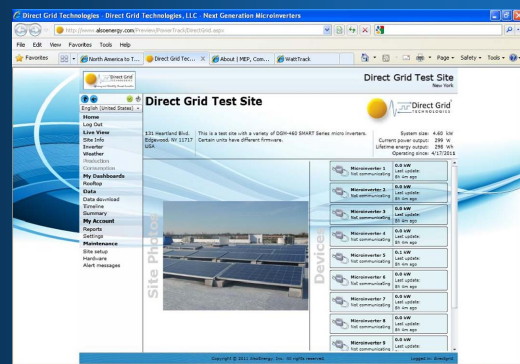


WattTrack™ MONITORING SOFTWARE AND WEB INTERFACE

HARVEST DETAILS MODULE PERFORMANCE EVENT COMMUNICATION

WattTrack™ Features

- Intuitive Web Based Graphical Interface
- Detailed Harvesting Information
- System Status 24/7 Availability
- Individual Micro Inverter Diagnostics
- Installer Customization
- Environmentals
- Weather



OVERVIEW

The Direct Grid WattTrack™ monitoring system is a web based subscription that enables easy viewing of harvested power and performance detail collected by each Echelon enabled micro-inverter & Echelon i.LON Server in an installed network. Appreciated by integrators and end users, the WattTrack™ server based website enables quick and easy identification and troubleshooting of module events. WattTrack™ provides power history in kilowatt-hours, current power generation, system status, individual micro inverter history, weather and environmentals as some of it's main attributes.

Sub-tabs enable viewing of a variety of collected data that can be used for diagnostic purposes and benchmarking . There's even a tab that enables viewing of power consumption versus generation (when the iLON Servers' pulse input is utilized from a compatible CT meter). As an added convenience, Direct Grid's WattTrack™ provides the ability to download harvested data to a PC for additional safekeeping.

WattTrack™ setup is made easy by step-by-step screen instructions through installer admin tabs. Site details, pictures, installer contact info and email alarm notifications can be inputted. Once an installation is commissioned, collection of data commences on each micro-inverter and data immediately becomes available on the WattTrack™ website 24 hours a day.

FEATURES and BENEFITS

Quick and Simple Setup: via the secure server, the intuitive WattTrack™ web interface helps guides the installer through setup.

Detailed Site System Performance: translates to faster troubleshooting of module events. Notification of potential problems are delivered in near real-time to the WattTrack™ monitoring system and authorized email alerts are sent. This enables fast response and increased uptime.

System Harvesting Status is Dependable -available around the clock, 24/7; Data is also downloadable for archiving.

Simple Customization and Admin of installer logo, details and site photos enable company promotion of installed sites in one location