

MICRO-INVERTER PART ORDERING CODE

EXAMPLE:

D G M - S 4 6 0 - 0 - 0 - 1 - MC4 - 50 - W - 460

DIRECT GRID MICRO-INVERTER

STEP 1 Model number always begins with DG (Direct Grid)

STEP 2 PV Module Type
A = amorphous thin film
M = mono, multi-crystalline

STEP 3 COMMUNICATION
S = Echelon Enabled
BLANK = OEM (none)

STEP 4 SERIES

460 = Gemini Series

STEP 5 ISLANDING PROTECTION

0 = in accordance to VDE 0126-1-1, CE
1 = in accordance to UL1741/CSA

STEP 6 GFI (Ground Fault Interruption)

0 = none
1 = yes

STEP 7 OUTPUT VOLTAGE

1 = 208VAC, 60Hz
2 = 230VAC, 50Hz
3 = 240VAC, 60Hz

STEP 8 CONNECTOR TYPE

TY = Tyco Solarlok
MC4 = Wieland MC4 Compatible
BLANK = bare wires

STEP 9 VOLTAGE INPUT

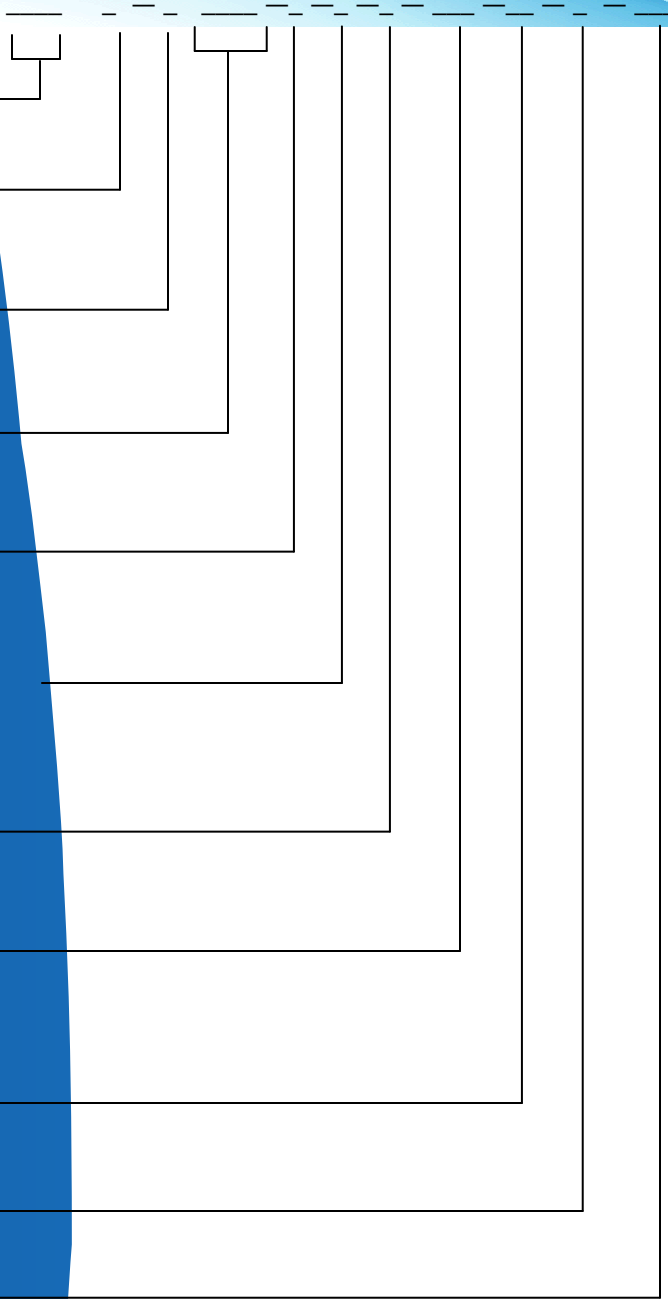
(30, 50, 60 or 150VDC)

STEP 9 AC CONNECTOR TYPE

W = Wieland RST Series

STEP 10 WATTAGE

Direct Grid Technologies, LLC
131 Heartland Blvd.
Edgewood, NY 11717
P: 631.242.1900
F: 631.242.1901
E: info@directgrid.com
W: www.directgrid.com



*note: not all combinations are possible. Please contact the factory at sales@directgrid.com or 631-242-1900, if there are any questions.